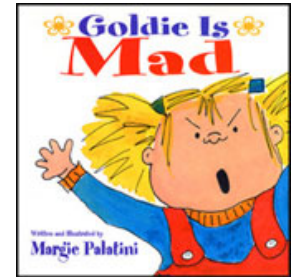
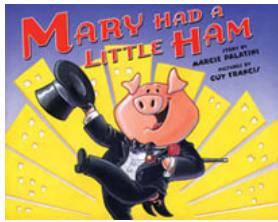




Union County Chapter of NJAKE invites you attend
our winter workshop

"Getting to Know Margie Palatini – popular children's author "

Learn ways to use her stories to address common core standards.



www.margiepalatini.com

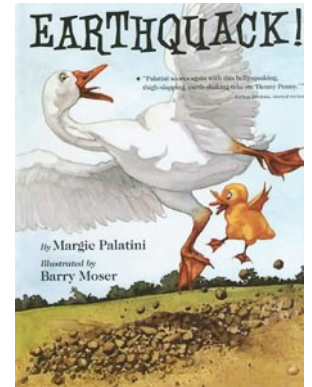
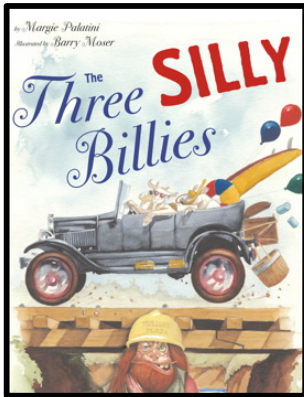
Thursday January 22, 2015

bad weather school closing date: January 29, 2015

Light hot Italian dinner 5:00 pm - presenter 6:00 to 8:00 p.m

at

Westfield Day Care Center
Assembly Hall in The Presbyterian Church
140 Mountain Ave. Westfield, N.J. 07090
telephone # 908-232- 6717



Pre-registration by January 10th required:

limited seating for first 150 to register

Make checks payable to UCAKE

You will receive 2 hours of professional development credit .

We are a registered provider with the N.J. Dept. of Education Professional Development System.

NJAKE members \$20.00 - Non-members \$45.00 includes membership

Mail checks to: Bonnie Gentesse 49 St. Johns St., Fanwood, N.J. 07023

Include:

Name and personal email address or phone number to confirm.

Union County Reps;

Lynn Bilman # 908 232-1706, Bonnie Gentesse, # 908 889-2075 ,
Angela Marinaro # 973 667-8461, Cathy DesRochers # 908 272-8736,
Rosemary Walsh # 732-340-1002

